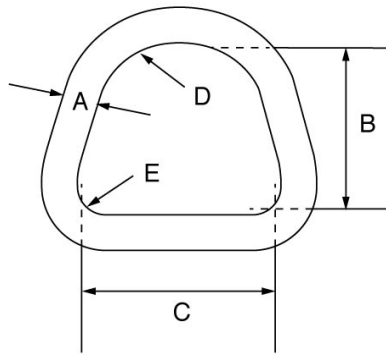


## Mild Steel Triangular Link – TL



- Mild steel.
- Self colour finish.
- Sizes generally to BS 2837-1.
- Minimum breaking load is 5 times the W.L.L.
- Marked with CE, W.L.L, size and product ID mark.
- Certification available **2.1** **DoC**

Product Code	W.L.L. t	A mm	B mm	C mm	D Radius Top mm	E Radius Bottom mm	Weight kgs
TL10	0.3	10	67	67	25	8	0.15
TL12	0.5	12	67	67	25	8	0.26
TL14	0.8	14	67	67	25	8	0.35
TL19	1.25	19	115	93	38	14	0.96
TL22	2	22	115	93	38	14	1.2
TL26	3.2	26	115	93	38	14	1.75

